



XC948E

— WHEEL LOADER —



CALL SALES

094 9251209

087 2466111

087 6685466





INTRODUCTION OF XCMG

Founded in 1943, XCMG is the largest enterprise in the Chinese construction machinery industry. We offer the most diverse product line and the highest technological standards. We provide a comprehensive set of construction solutions, and we are the most internationally competitive firm in the industry. On KHL Yellow Table, we rank No. 1 in China and No.3 globally.

Across our offices in China, the US, Germany, India, and Brazil, XCMG has established a global collaborative research platform including national-level R&D facilities focused on advanced smart manufacturing technology. Our R&D team consists of top talents from around the globe. They are researching cutting-edge technologies such as new energy, unmanned driving and high-end parts. Our work has earned us numerous international patents and awards.

XCMG has the most comprehensive product line, meaning we can offer fully comprehensive solutions in 9 areas: hoisting, earthwork, road building & maintenance, mining, concrete & paving, tunnel-building & underground construction, high-altitude firefighting equipment & special-purpose vehicles, railway & bridge construction, sanitation engineering. All these solutions can be customized to suit our customers' needs.

At XCMG, our five-continent sales network gives our products worldwide visibility. We have 300 overseas distributors, over 10 overseas manufacturing bases and KD (Knockdown) factories, and products in more than 180 countries and regions. We supply our global customers with pre-sales, mid-sales and after-sales service, and a convenient, efficient one-stop financing and leasing service. XCMG's total annual exports and overseas income consistently come top of the industry in China.

We care deeply for the welfare of the people. We support numerous charitable causes, and are quick to the scene during disaster relief efforts.

XCMG is all set to become an eternal brand with our feet on the ground and eyes on the horizon. XCMG's ambition leads us forever forwards. XCMG is scaling its Everest, and is determined to reach the top.



OVERVIEW

Through technological innovation, XCMG has achieved value innovation for customers and met the demands of customers in North America and Europe. Facing the development trend of "intelligent, high-quality, high-performance" in loader industry, XCMG has formed an international design team to build the new generation XC9 series loader with the highest technical level.

The XC948E is equipped with an EU Stage V/EPA Tier IV engine, ZF 4BP190 automatic transmission, XCMG wet drive axle, and electro-hydraulic load-sensing hydraulic system. The whole machine has significant advantages in reliability, energy saving, high efficiency and comfort, reaching the international advanced level.



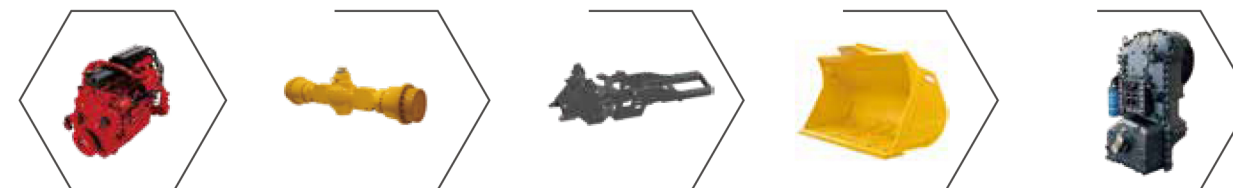
PERFORMANCE AND FEATURES

HIGH RELIABILITY

The XC9 series loaders have unmatched reliability, enabling them to work continuously for long time with less unnecessary maintenance.

Cummins B6.7 engine has the advantages of high reliability, high adaptability, low fuel consumption and low emission, and can provide strong power for harsh working conditions. The fully automatic 4BP190 transmission optimizes and reduces the shift shock and increases the service life. The machine is also equipped with XCMG wet drive axles that have been tested for heavy loads, it can fully meet the needs of heavy-duty work. Full hydraulic wet braking system, high reliability and maintenance-free; transmission, drive axle, fuel tank, hydraulic oil tank are equipped with high-flux breathing apparatus to ensure the cleanliness of each system.

The design of super-heavy-duty structural parts optimizes the hinge point of the boom to greatly improve the reliability of the bucket and boom. Based on finite element analysis and optimization, it ensures the structural strength and prolongs the life of the machine. The cab and the hood adopt an integral skeleton structure, with thick plates and high rigidity, which are more reliable and safer. The whole machine can be used for more severe working conditions. The bucket is enhanced with wear-resistant design, and key parts are made of wear-resistant and impact-resistant high-strength steel plates.



HIGH EFFICIENCY

XCMG has deeply optimized the traditional Z-bar linkage system for powerful tipping force and superior boom lift in any position, strong ability and quick reaction.

The bucket is designed with an optimized profile to fill the bucket faster and more efficiently while loading, also can achieve a high fill coefficient. The top of the bucket is equipped with a deflector to reduce material spillage during the lifting process and effectively protect the cab.

The redesigned hydraulic system realizes the simultaneous action of bucket turning and lifting, providing more powerful digging capacity for the bucket, and the bucket loads materials more quickly.

According to different construction demands, the machine can be equipped with a variety of sturdy and durable tools to maximize productivity and obtain more uses. Whether repeated material moving, loading and unloading, timber gripping, steel pipes, or any other application, these tools will absolutely deal with a variety of tasks and increase efficiency.

XC948E

HIGHER SAFETY PERFORMANCE

Safety is the premise of all work, and XCMG attaches great importance to safety.

Equipped with a rear-view camera to reduce blind spots and improve operational safety.

Equipped with a high-decibel reversing buzzer to improve the warning effect and ensure the safety of the working environment.

ROPS/FOPS cab, complies with ISO 3449, ISO 3471, ISO 3164 standards.

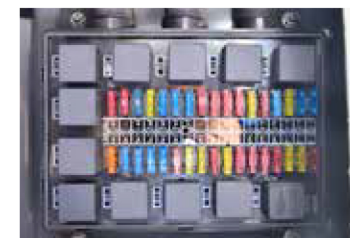
The ladders, passages and platform handrails of the whole machine are safer and more reasonable, and the handrails are optimally arranged to meet the three-point support requirements.

Flame retardant materials are used in the interior of the cab and are equipped with fire extinguishers.

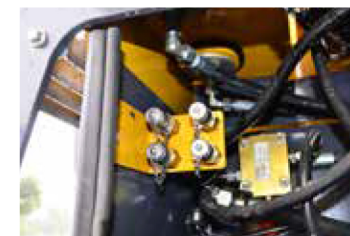
Equipped with an oil cylinder support frame and a locking lever in the hinge center to improve the safety during vehicle maintenance.

EASY MAINTENANCE

XC948E



Excellent maintenance channel for the whole machine, as well as reasonable layout and structural design of the whole machine.



The new digital combination instrument, the vehicle running status and various information are clear at a glance;



Single-row large-spacing radiator, upturnable rear cover;



Centralized oil discharge and water discharge device, reasonable arrangement of pressure measuring points, convenient for daily maintenance and inspection



The centralized lubrication system provides lubricating grease to each joint point of the machine regularly and quantitatively, reducing the maintenance frequency and improving the maintenance efficiency. At the same time, the automatic lubrication cycle can be adjusted according to the working conditions.



ENERGY SAVING

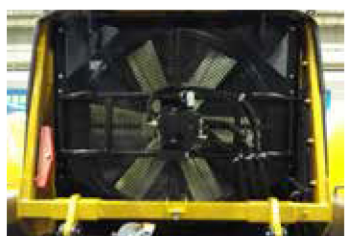
HIGH RELIABILITY



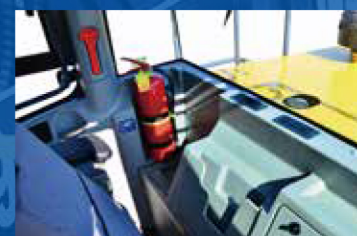
Efficient power and hydraulic systems, excellent power matching and low-speed energy-saving cooling systems ensure that the loader operates in the most efficient and energy-saving state.



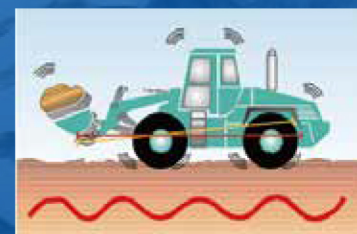
The load-sensing hydraulic system provides power to the hydraulic device and steering device according to the load, without wasting energy and reducing fuel consumption;



Intelligent independent cooling system, automatic and stepless adjustment of fan speed, reduce operating noise, and can significantly reduce fuel consumption.



The optional Ride Stabilization System improves ride stability and load retention when driving on rough surfaces. Drivers will have more confidence in transfer operations at higher speeds, increasing productivity.



The hydraulic joystick integrated with the FNR switch realizes the rapid switching of the machine forward and reverse, and improves the work efficiency.



Excellent golden power assembly, scientific and reasonable power matching ensure that the machine runs in the most efficient state.



CONFIGURATION

Transmission system

Engine	●
Rated Power	●
Emission Standard	●
Emissions	●
Fuel rate	●
Bore	●
Stroke	●
Other parameters	●
Gearbox	●
Oily Water Separator	●
Radiator	●
fan	●
Drive axle	●
Tire	●

Hydraulic System

Steering load sensing	●
Oil Sampling System	●
Triple valve hydraulic line	●
Hydraulic control	●
FNR shift	●
Centralized pressure measurement	●

Electric System

Heavy-duty electronically controlled starting system	●
24V Start/Charge System 24V	●
Lighting system	●
Electronic weighing system	●
Vehicle backup camera	●
12V power socket	●
Engine cold-start	●
rear-view mirror heating	●

Cab System

pressurized Cab	●
Steering column adjustable	●
Suspension seat	●
radio	●
In-cab rear-view mirror	●
AC	●
Side window slidable	●
Cab tiltable	●

Dashboard

Gear Display / Speedometer / Hours of Operation / Fault Codes	●
Engine water temperature/engine oil pressure/ transmission oil temperature/fuel level/brake pressure	●

Others

Centralized lubrication	●
Full-mudguard	●
Cab protection fence	●
emergency steering	●
Stability module	●
fast fuel	●
Front axle LSD (Limited Slip Differential)	●
ROPSFOPS	●
Dumping height	●
Bucket capacity	●

Working device

auto-leveling system	●
Lifting limit system	●
Quick-change device	●
Z-bar, cast crosstube/tilt lever	●



MAIN PARAMETERS

Items

Rated operating load	4500	kg
Bucket capacity	2.4	m ³
Operating weight	16500	kg
Dump clearance at max. lift	2840	mm
Reach at max. lift	1200	mm
Wheel base	3050	mm
Tread	2020	mm
Height of hinge at max. lift height	3970	mm
Working height(fully lifted)	5470	mm
Max.breakout force	140	kN
Max.traction force	135	kN
Hydraulic cycle time-raise	5.2	s
Total hydraulic cycle time	10.2	s
Min. turning radius over tyres	5200	mm
Articulation angle	40	°
Gradeability	28	°
Tyre size	20.5R25	
Overall machine dimension L×W×H	7882×2550×3405	mm
Model	B6.7	
Emission standards	EU Stage V	
Rated Power/Speed	149/2200	kW/rpm
Fuel Tank	220	L
Hydraulic Tank	220	L
Travel speed I -gear(F/R)	7	km/h
Travel speed II -gear(F/R)	15	km/h
Travel speed III-gear(F)	27	km/h
Travel speed IV-gear(F)	40	km/h



MAIN DIMENSION PARAMETERS

Quick- change bucket for STD boom

Bucket	1.9m ³	2.4m ³	3.0m ³	单位
Bucket L*W*H	7582×2550×3405	7882×2550×3405	7952×3000×3405	mm
Bucket weight	870	1360	1400	kg
Machine weight	16000	16500	16560	kg
A	7582	7882	7952	mm
B	6350	6350	6350	mm
C	3050	3050	3050	mm
D	410	410	410	mm
F	3405	3405	3405	mm
H	3040	2840	2790	mm
H1	2940	2740	2740	mm
J	3740	3740	3740	mm
K	3970	3970	3970	mm
L	5370	5470	5470	mm
M	1000	1200	1250	mm
M1	1100	1300	1300	mm
O	56.4	56.4	56.4	°
P	45	45	45	°
R	42	42	42	°
R1	41	41	41	°
T	60	60	60	mm
U	260	260	260	mm
V	2550	2550	3000	mm
X	2020	2020	2020	mm
Y	2540	2540	2540	mm
Z	3275	3275	3275	mm
a1	6160	6195	6235	mm
a2	5345	5345	5345	mm
a3	2925	2925	2925	mm
a4	40	40	40	°

Non-quick-change bucket for high-dump boom

	2.4m ³	2.6m ³	3.0m ³	单位
Bucket L*W*H	8300×2550×3405	8420×2550×3405	8225×3000×3405	mm
Bucket weight	1070	1280	1515	kg
Machine weight	16420	16540	16920	kg
A	8392	8420	8225	mm
B	6350	6350	6350	mm
C	3050	3050	3050	mm
D	410	410	410	mm
F	3405	3405	3405	mm
H	3365	3260	3390	mm
H1	3220	3160	3290	mm
J	4170	4170	4170	mm
K	4400	4400	4400	mm
L	5805	5805	5805	mm
M	1010	1160	1300	mm
M1	1110	1260	1350	mm
O	51.6	51.6	51.6	°
P	45	45	45	°
R	42	42	42	°
R1	41	41	41	°
T	137	137	137	mm
U	260	260	260	mm
V	2550	2550	3000	mm
X	2020	2020	2020	mm
Y	2540	2540	2540	mm
Z	3275	3275	3275	mm
a1	6580	6623	6673	mm
a2	5345	5345	5345	mm
a3	2925	2925	2925	mm
a4	40	40	40	°



OPTIONAL CONFIGURATION



Michelin radial tire 20.5R25

ride control system

emergency steering system

low temperature start system

automatic lubrication system

rear mudfender

high-dump boom

various buckets (for customize)

various attached tools



XC948E YOUR BEST HELP

Cab

FOPS&ROPS certified safe and comfortable cab with ergonomically designed interior to provide the driver with an excellent operating environment.

Drive axle

maintenance-free full hydraulic wet drive axle, safe and reliable

Transmission

automatic power shift transmission, automatically adjust the loader gear to ensure that the loader is working in the most efficient and energy-saving state

Intelligent hydraulic system

load-sensing variable hydraulic system, supply on demand, automatically adjust the supply of hydraulic system capacity, reduce fuel consumption



Easy to maintain

The integral electric back-flip hood + upturnable rear baffle cover is convenient for maintenance service to overhaul the equipment.

Tools

XCMG can provide you with a variety of tools to meet individual needs and improve production efficiency.

Z-Linkage System

XCMG has deeply optimized the traditional Z-Linkage for great power in any position.

Intelligent hydraulic system

Through the reasonable matching of engine and gearbox, the response of the whole machine is faster, and the fuel consumption of the whole machine is reduced by 10%.

OPTIMUM SERVICES XCMG GUARANTEED



XCMG approved
attachments



Genuine parts



Financial
solutions



Maintenance
contract



Telematics

Professional Integrated Complete Solutions

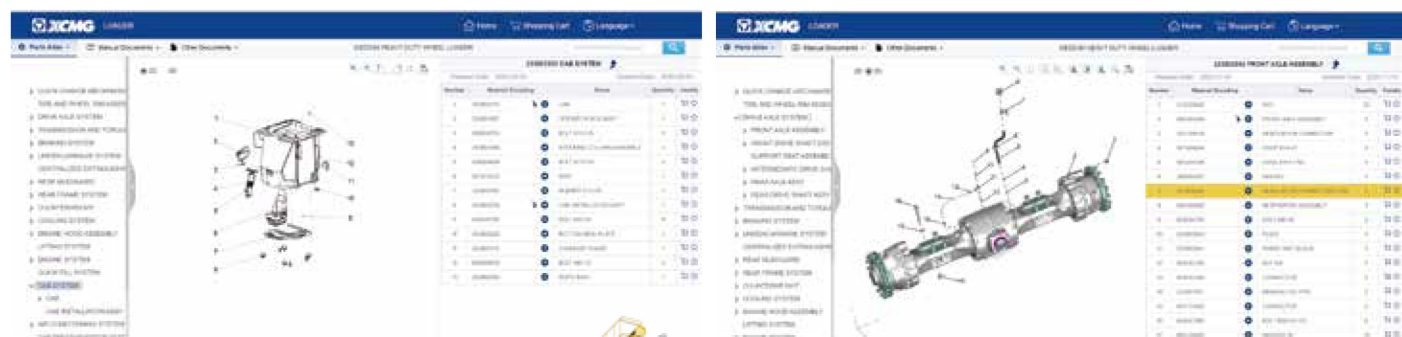
XCMG group has built a strong reputation based on the quality, reliability and durability of its construction machinery. What's more, XCMG has gradually established a service network to constantly provide its local integrated and highly efficient complete solutions for all customers.

Full Range of Services Ready for you

In order to respond to your needs as fast as possible, XCMG experts are on their way to your job site from one of our facilities near you. Full range of services are available in order to reduce your total cost of ownership and increase your revenue.



XCMG Global Spare parts System



Mobile cranes



Excavators



Aerial work platforms



Wheel loaders



Road machinery

