



All Rights Reserved

Materials and specifications are subject to change without notice.
Featured machines in photos may include additional equipment.
See your XCMG dealer for available options.



XC958E

WHEEL LOADER

EU Stage V/EPA Tier IV



MG PLANT & MACHINERY
EXPORTS & SALES LTD

CALL SALES

094 9251209

087 2466111

087 6685466





INTRODUCTION OF XCMG

Founded in 1943, XCMG is a multinational corporation with the most comprehensive range of competitive, influential products in the construction machinery industry. Our business covers eight key areas: construction machinery, heavy trucks, mining machinery, sanitation machinery, machinery components, construction, finance, and the ICT industry.

XCMG has established a global R&D network with a total of six centers in China, the US, Germany, Brazil and India, with China national technology center at its core. In addition to a number of manufacturing bases in China, the US, Germany, the Netherlands, Poland, Austria, Brazil, India, and Uzbekistan, we possess two complete machine brands (XCMG, Schwing), and several component brands including FT, AMCA. It is the strength of this global R&D network and manufacturing operations that has made XCMG the industry leading global construction equipment manufacturer that it is today.

For more than 30 years, XCMG has been sowing the seeds of overseas development as the No. 1 exporter in China's construction machinery industry. Today, we have 42 branches and offices, 315 distributors, 526 contractors in 188 countries and regions worldwide and are still growing rapidly.

XCMG IN EUROPE

Since its foundation in 2012, XCMG is gradually establishing a complete network including: R&D department, local distribution, supply chain management and an integrated customer services training centre. Nowadays, with 4 branches, XCMG has 178 multinational employees in Europe, of which more than 50% are R&D engineers:

ERC: XCMG European Research Center GmbH EPC: XCMG European Purchasing Center GmbH

ESS: XCMG European Sales and Services GmbH

Our local professional R&D team and cutting-edge innovation platform guarantee that our products are carefully crafted to the smallest detail according to diverse needs of European customers.



OVERVIEW

- ▶ XC958E wheel loader is a new generation of loader. XCMG makes full use of Group's international R&D platform to integrate global technology research and development resources to create international advanced and completely independent intellectual property rights. This model is powerful, rugged, energy efficient, safe and comfortable, and easy maintenance and is the optimal choice for ports, mines, coals, and engineering construction and so on.
- ▶ XC958E is equipped with EU Stage V/Tier 4 emission engine, ZF 4BP 210 automatic transmission, ZF wet drive axle, electro-hydraulic load sensing hydraulic system. The whole machine has significant advantages in terms of reliability, energy saving, high efficiency and comfort, and has reached the international advanced level.



PERFORMANCE AND FEATURES

High Reliability

- ▶ Cummins B6.7 Engine, complying with Cummins B6.7 Engine providing power of complex working conditions and providing power of complex working conditions.
- ▶ Automatic 4BP 210 torque converter, reduced shifting impact in travelling for various working conditions.
- ▶ ZF performance wet axle, meeting high loaded working requirements.
- ▶ Full hydraulic wet brake system of high reliability and maintenance free.
- ▶ Extra heavy load frame structure design, FEA analysis on key structural to ensure strong structure and extended machine life.
- ▶ Wear-resistance and impact-resistance high strength steel plate for bucket material.

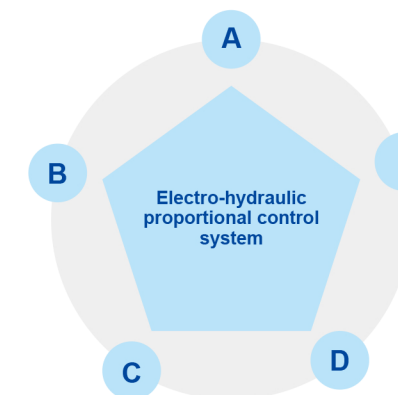


Intelligent

- ▶ The intelligent heat management system's large radiator + low-speed fan can automatically adjust the speed according to the heat dissipation requirements, so that the whole machine can quickly reach and maintain the best working condition, reduce energy consumption and reduce noise pollution. The fan has an automatic reversal function for self-cleaning in high dust environments.
- ▶ Electro-hydraulic proportional load sensitive hydraulic system provides on-demand distribution of fuel supply during steering and work unit operation. At the same time, command-based control makes the operator's work easier and more fun.

B Automatic position restriction: Realize the position memory of the boom high position, low position and bucket recovery position, so that the working device automatically moves to the set position automatically.

C Jog: Raise and lower the boom to achieve high precision jog control without affecting the maximum speed.



A Buffering function: When the boom is activated, stopped or close to the limit, the action buffer is decelerated to prevent impact and avoid severe vibration.

E Level and lift: Most machines have this function, like forklift. With this function, the machine may maintain its horizontal attitude when it completes its lifting and descending operation.

D Automatic leveling: automatic reset and leveling of the working device after unloading

Comfort Operation

- ▶ Spacious and ergonomic cab with excellent visibility.
- ▶ FOPS/ROPS cab with heat and air conditioning provides good air flow through multiple vents.
- ▶ The cab is well seated and insulated to provide a dust proof environment.
- ▶ All switches are conveniently placed.
- ▶ Digital gauges monitor the machine vital functions.
- ▶ Suspension seat with lumbar support reduce operator fatigue.
- ▶ Integrated F-N-R pilot control lever of shifting function for precise control, easy operation and high working efficiency.



High Safety Performance

- ▶ Complying with standards of ISO 5006 operator vision field.
- ▶ Complying with standards of ISO 3449, ISO 3471, ISO 3164 ROPS/FOPS cabs.
- ▶ Complying with standard of ISO 2867, ISO 2860 ladders, passageway, operation platform and exit/ excess.
- ▶ Flame retardant material applied in cab interiors, extinguisher equipped.
- ▶ Complying with standards of ISO 10533、ISO 10570 lifting arm bracket and hinged lock devices.



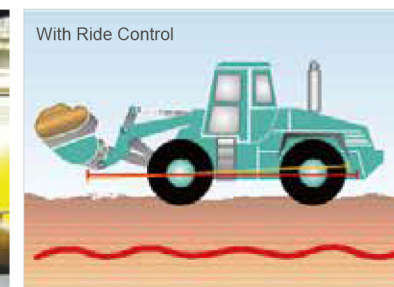
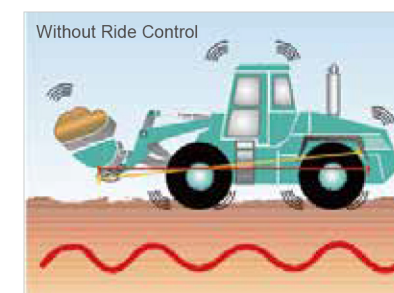
Easy Maintenance

- ▶ The new digital combination meter, the vehicle running status and various types of information at a glance.
- ▶ Side-turn cab and large-angle integral rear steering hood for complete display of all key components for easy maintenance and service.
- ▶ Single row of large tone radiators, upturned back cover.
- ▶ Centered electrical fuse box for effortless check up and high reliability.
- ▶ Remote centered lubrication, drainage pressure testing of daily maintenance.



Energy Saving

- ▶ Load sense hydraulic system featuring automatic adjusting operation condition, improving fuel efficiency.
- ▶ Intelligent independent cooling system, fan rotation on request for energy and noise reduction. Separated cooling layout with improved cooling efficiency and fuel efficiency.
- ▶ Full automatic torque converter, two working mode, enabling the operator match the optimum efficiency according to working requirement.
- ▶ Pilot control lever integrating F-N-R shifting function minimizing operation motions with higher working efficiency.
- ▶ Improved traveling performance and load retention.

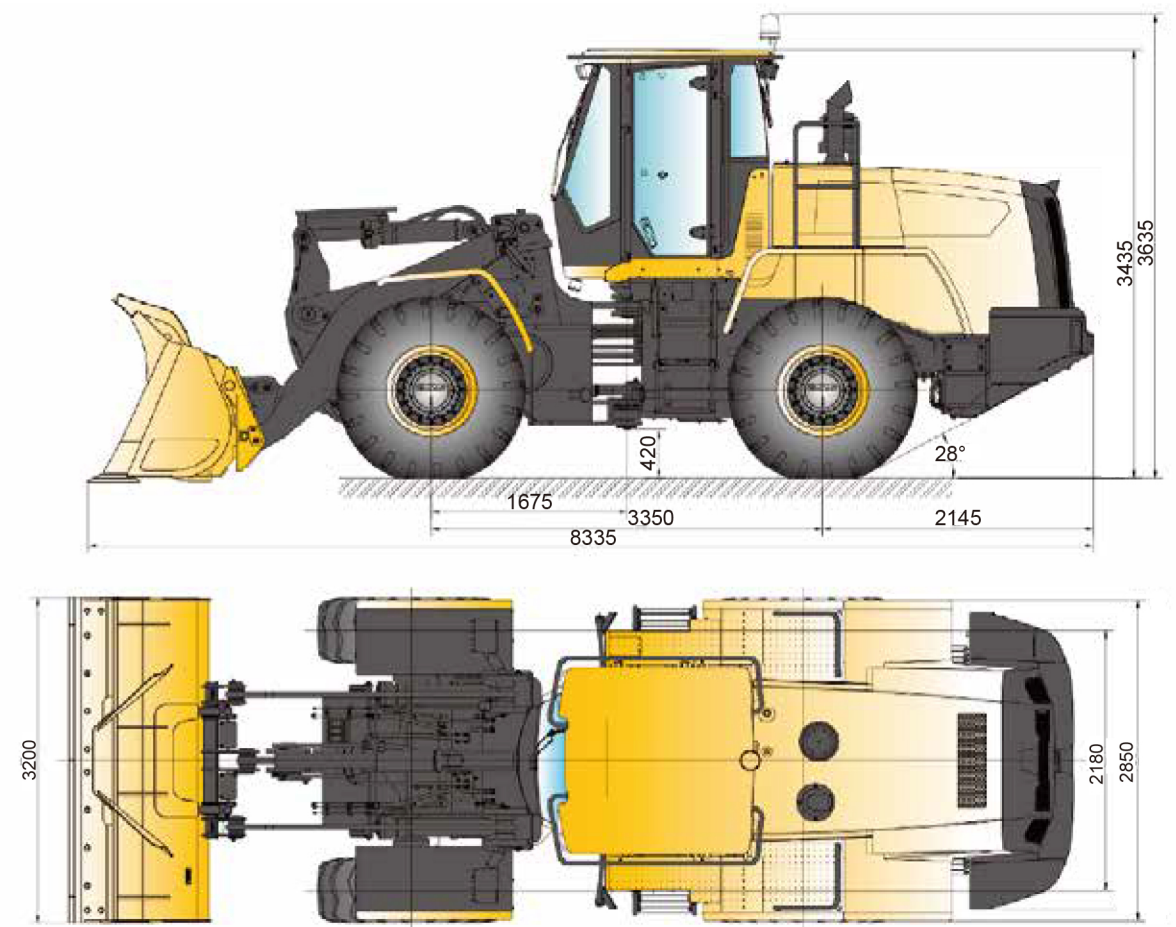


TECHNICAL SPECIFICATIONS

Item	Parameter (STD Boom)	Parameter (High Dump)
Rated bucket capacity /m ³	3.5	3.2
Rated working load /kg	5500	5500
Operating weight /kg	17650	17600
Dumping height /mm	3060	3360
Dumping reach /mm	1240	1175
Wheelbase /mm	3350	3350
Track /mm	2180	2180
Overall length /mm	8335	8685
Overall height /mm	3435	3435
Bucket width /mm	3200	2996
Maximum breakout force/kN	165	149
Maximum traction force/kN	170	170
Turning radius (Center of Tire) /mm	5695	5695
Boom lifting time /S	5.7	5.7
Total cycle time /S	10.4	10.4
Engine	Model	B6.7
	Rated power /KW	168
	Declared rotating speed/r/min	2200
Tire specifications		23.5-25
		23.5-25
Driving Speed/Km/h	Forward/Reverse 1	6.5/6.5
	Forward/Reverse 2	11/11
	Forward/Reverse 3	24/24
	Forward4	38

Note: the job content of standard machine is as below: moderate all kinds of lubricants, full fuel oil and the operator with the weight of 75kg.

OUTLINE DIMENSIONS (STD Boom)



OPTIONAL CONFIGURATIONS

- 23.5R25 radial tires
- ride control system
- emergency steering system
- low temperature start system
- automatic centered lube system
- closed rear fender
- machine protection in landfill
- lengthened boom
- various buckets (or customized)
- several attached tools



XCMG approved attachments



Genuine parts



Financial solutions



Maintenance contract



Telematics

Professional Integrated Complete Solutions

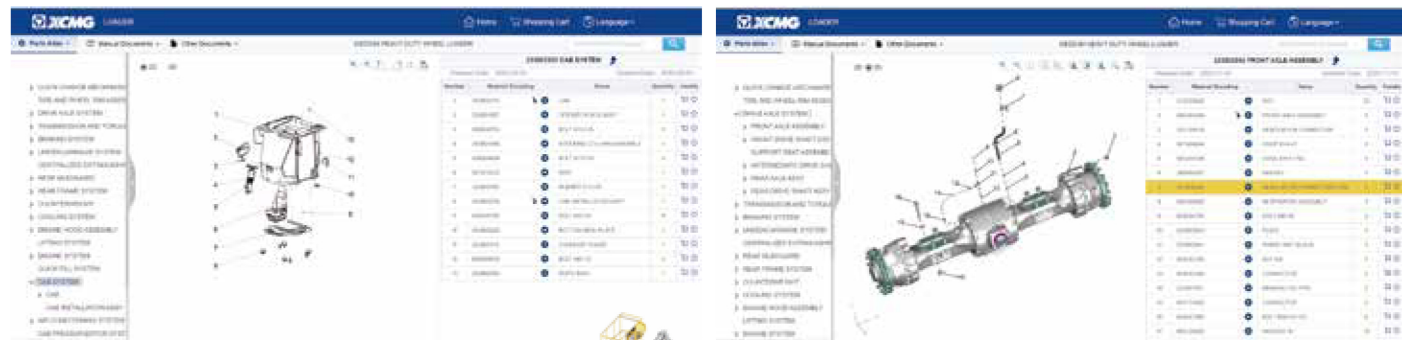
XCMG group has built a strong reputation based on the quality, reliability and durability of its construction machinery. What's more, XCMG has gradually established a service network to constantly provide its local integrated and highly efficient complete solutions for all customers.

Full Range of Services Ready for you

In order to respond to your needs as fast as possible, XCMG experts are on their way to your job site from one of our facilities near you. Full range of services are available in order to reduce your total cost of ownership and increase your revenue.



XCMG Global Spare parts System



Mobile cranes

Excavators

Aerial work platforms

Wheel loaders

Road machinery

