



All Rights Reserved

Materials and specifications are subject to change without notice.  
Featured machines in photos may include additional equipment.  
See your XCMG dealer for available options.



# XC968E

## WHEEL LOADER

EU Stage V/EPA Tier IV



**MG** PLANT & MACHINERY  
EXPORTS & SALES LTD

**CALL SALES**

**094 9251209**

**087 2466111**

**087 6685466**







# INTRODUCTION OF XCMG

Founded in 1943, XCMG is a multinational corporation with the most comprehensive range of competitive, influential products in the construction machinery industry. Our business covers eight key areas: construction machinery, heavy trucks, mining machinery, sanitation machinery, machinery components, construction, finance, and the ICT industry.

XCMG has established a global R&D network with a total of six centers in China, the US, Germany, Brazil and India, with China national technology center at its core. In addition to a number of manufacturing bases in China, the US, Germany, the Netherlands, Poland, Austria, Brazil, India, and Uzbekistan, we possess two complete machine brands [XCMG, Schwing], and several component brands including FT, AMCA. It is the strength of this global R&D network and manufacturing operations that has made XCMG the industry leading global construction equipment manufacturer that it is today.

For more than 30 years, XCMG has been sowing the seeds of overseas development as the No. 1 exporter in China's construction machinery industry. Today, we have 42 branches and offices, 315 distributors, 526 contractors in 188 countries and regions worldwide and are still growing rapidly.

# XCMG IN EUROPE

Since its foundation in 2012, XCMG is gradually establishing a complete network including: R&D department, local distribution, supply chain management and an integrated customer services training centre. Nowadays, with 4 branches, XCMG has 178 multinational employees in Europe, of which more than 50% are R&D engineers:

**ERC: XCMG European Research Center GmbH**  
**ESS: XCMG European Sales and Services GmbH**  
**EPC: XCMG European Purchasing Center GmbH**

Our local professional R&D team and cutting-edge innovation platform guarantee that our products are carefully crafted to the smallest detail according to diverse needs of European customers.





## OVERVIEW

- ▶ Through technological innovation, XCMG has achieved value innovation for customers and met the demands of customers in North America and Europe. Facing the development trend of "intelligent, high-quality, high-performance" in loader industry, XCMG has formed an international design team to build the new generation XC9 series loader with the highest technical level.
- ▶ The XC968E is equipped with an EU Stage V/EPA Tier IV engine, ZF 4BP230 automatic transmission, XCMG wet drive axle, and electro-hydraulic load-sensing hydraulic system. The whole machine has significant advantages in reliability, energy saving, high efficiency and comfort, reaching the international advanced level.



## PERFORMANCE AND FEATURES

### High Reliability

- ▶ The XC9 series loaders have unmatched reliability, enabling them to work continuously for long time with less unnecessary maintenance. Proven transmission parts, heavy-duty structural parts, and more considerate detail design, the whole machine is capable of handling more severe working conditions.
- ▶ The Cummins L9 engine has the advantages of high reliability, high adaptability, low fuel consumption and low emission, and can provide strong power for harsh working conditions.
- ▶ The fully automatic 4BP230 gearbox optimizes and reduces the shift shock and improves the service life.
- ▶ XCMG wet drive axles fully meet the requirements of heavy-duty work.
- ▶ Full hydraulic wet braking system, high reliability and maintenance-free.
- ▶ The design of super heavy-duty structural parts, based on finite element analysis and optimization, ensures structural strength and prolongs machine life.
- ▶ The bucket is enhanced with wear-resistant design, and key parts are made of wear-resistant and impact-resistant high-strength steel plates.



### Work Efficiency

- ▶ XCMG has deeply optimized the traditional Z-bar linkage system for powerful tipping force and superior boom lift in any position.
- ▶ The redesigned hydraulic system realizes the simultaneous action of bucket turning and lifting, providing more powerful digging capacity for the bucket, and the bucket loads materials more quickly.
- ▶ The bucket is designed with an optimized profile to fill the bucket faster and more efficiently while loading, also can achieve a high fill coefficient. The top of the bucket is equipped with a deflector to reduce material spillage during the lifting process and effectively protect the cab.
- ▶ According to different construction demands, the machine can be equipped with a variety of sturdy and durable tools to maximize productivity and obtain more uses. Whether repeated material moving, loading and unloading, timber gripping, steel pipes, or any other application, these tools will absolutely deal with a variety of tasks and increase efficiency.



## Operation Comfort

- ▶ We know that when the drivers feel comfortable, then his or her fatigue can be reduced, and also productivity and operational safety can be improved. Therefore, an industry-leading cab is designed with the operator in mind, providing a spacious, safe, quiet and comfortable environment, which can further improve work safety and maintain high production efficiency.
- ▶ Spacious and ergonomic cab with great visibility.
- ▶ The air conditioning system as basic configuration ensures good air circulation through scientific and reasonable air outlet arrangement.
- ▶ The cab features an easy-to-replace air filter. The fresh air passes through the filter, separates dust and particles, and then enters the cab. At the same time, with the excellent sealing performance of the cab, it has a micro-pressurization effect and further isolates external dust. A clean and comfortable work environment goes hand in hand with productivity.
- ▶ All switches are at your fingertips, convenient and quick.
- ▶ Digital instrument monitors all important functions of equipment.
- ▶ Airbag shock-absorbing seat with lumbar support to reduce operator fatigue.
- ▶ Electronic shift lever with integrated FNR for precise control, easy operation and high efficiency.



## Higher Safety Performance

- ▶ Safety is the premise of all work, and XCMG attaches great importance to safety.
  - ▶ Equipped with a rear-view camera to reduce blind spots and improve operational safety.
  - ▶ Equipped with a high-decibel reversing buzzer to improve the warning effect and ensure the safety of the working environment.
  - ▶ ROPS/FOPS cab, complies with ISO 3449, ISO 3471, ISO 3164 standards.
  - ▶ The ladders, passages and platform handrails of the whole machine are safer and more reasonable, and the handrails are optimally arranged to meet the three-point support requirements.
  - ▶ Flame retardant materials are used in the interior of the cab and are equipped with fire extinguishers.
- Equipped with an oil cylinder support frame and a locking lever in the hinge center to improve the safety during vehicle maintenance.



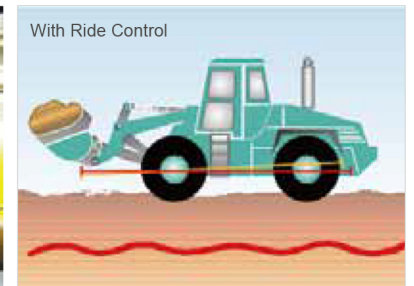
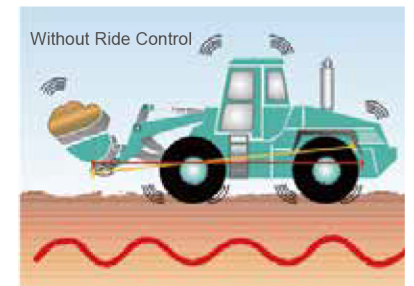
## Easy Maintenance

- ▶ Excellent maintenance channel for the whole machine, as well as reasonable layout and structural design of the whole machine.
- ▶ The new digital combination instrument, the vehicle running status and various information are clear at a glance;
- ▶ Single-row large-spacing radiator, upturnable rear cover;
- ▶ Centralized oil discharge and water discharge device, reasonable arrangement of pressure measuring points, convenient for daily maintenance and inspection.
- ▶ The centralized lubrication system provides lubricating grease to each joint point of the machine regularly and quantitatively, reducing the maintenance frequency and improving the maintenance efficiency. At the same time, the automatic lubrication cycle can be adjusted according to the working conditions.



## Energy Saving

- ▶ Efficient power and hydraulic systems, excellent power matching and low-speed energy-saving cooling systems ensure that the loader operates in the most efficient and energy-saving state.
- ▶ The load-sensing hydraulic system provides power to the hydraulic device and steering device according to the load, without wasting energy and reducing fuel consumption;
- ▶ Intelligent independent cooling system, automatic and stepless adjustment of fan speed, reduce operating noise, and can significantly reduce fuel consumption.
- ▶ The optional Ride Stabilization System improves ride stability and load retention when driving on rough surfaces. Drivers will have more confidence in transfer operations at higher speeds, increasing productivity.
- ▶ The hydraulic joystick integrated with the FNR switch realizes the rapid switching of the machine forward and reverse, and improves the work efficiency.
- ▶ Excellent golden power assembly, scientific and reasonable power matching ensure that the machine runs in the most efficient state.



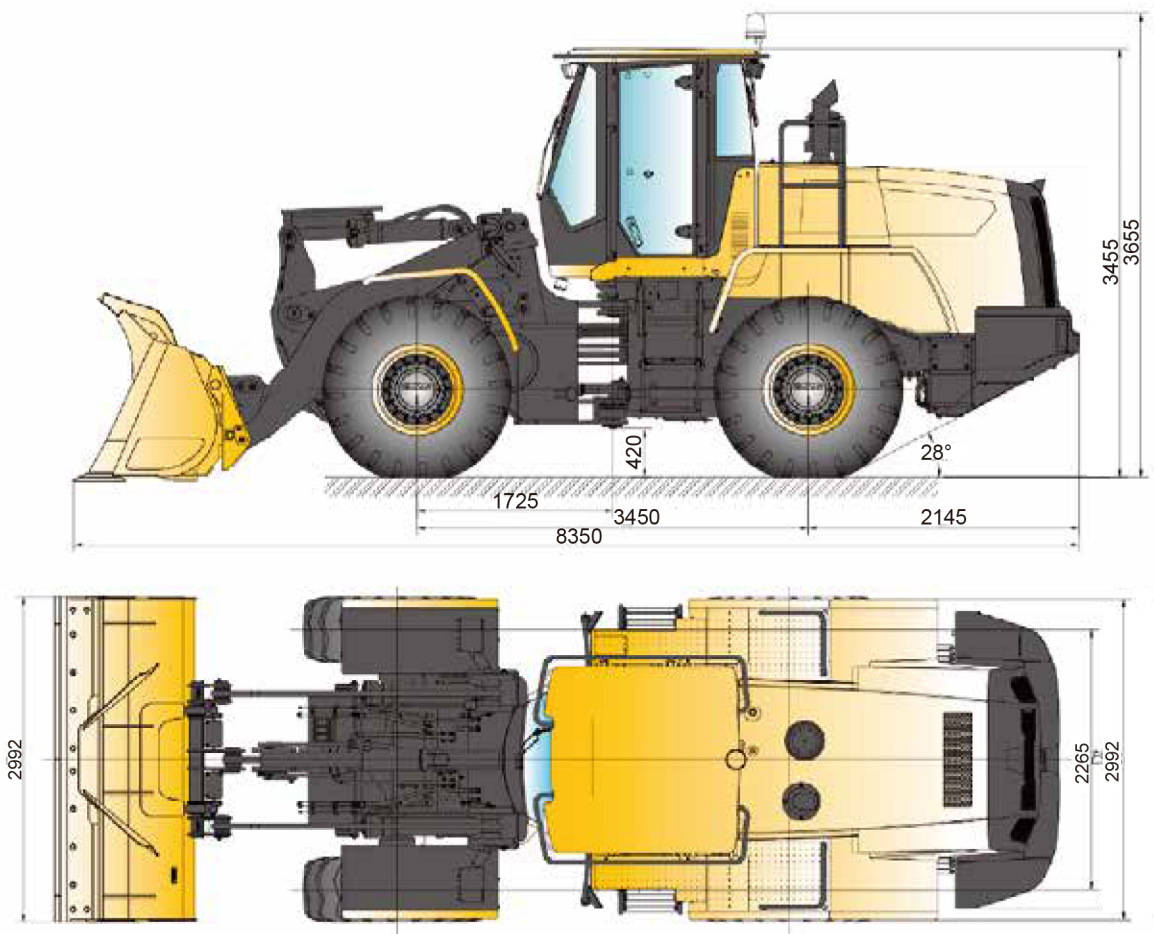


### TECHNICAL PARAMETERS

Items		23.5R25 (STD)	26.5R25 (OPT)
Rated bucket capacity /m <sup>3</sup>		3.5	3.5
Rated working load /kg		5000	6000
Operating weight /kg		22000	22600
Dumping height /mm		3150	3220
Dumping reach /mm		1250	1180
Wheelbase /mm		3450	3450
Track /mm		2265	2180
Minimum ground clearance/mm		420	490
Overall length /mm		8350	8350
Overall height /mm		3455	3515
Bucket width /mm		2996	2996
Maximum breakout force/kN		220	220
Maximum traction force/kN		180	172
Clearance Circle/Radius (Center of Tire) /mm		5875	5900
Boom lifting time /S		≤5.9	≤5.9
Total cycle time /S		≤10.9	≤10.9
Engine	Model	L9(Stage V)	L9(Stage V)
	Rated power /KW	210	210
	Declared rotating speed/r/min	2100	2100
Drive Speed/Km/h	Forward/Reverse 1	6.5/6.9	7.1/7.5
	Forward/Reverse 2	12.6/13.3	13.7/14.5
	Forward/Reverse 3	23.5/24.6	25.6/26.8
	Forward4	36.9	40

Note: the job content of standard machine is as below: moderate all kinds of lubricants, full fuel oil and the operator with the weight of 75kg.

### OUTLINE DIMENSIONS



### OPTIONAL CONFIGURATIONS

- ride control system
- emergency steering system
- low temperature start system
- automatic lubrication system
- rear mudfender
- high-dump boom
- various buckets (for customize)
- various attached tools





XCMG approved attachments



Genuine parts



Financial solutions



Maintenance contract



Telematics

## Professional Integrated Complete Solutions

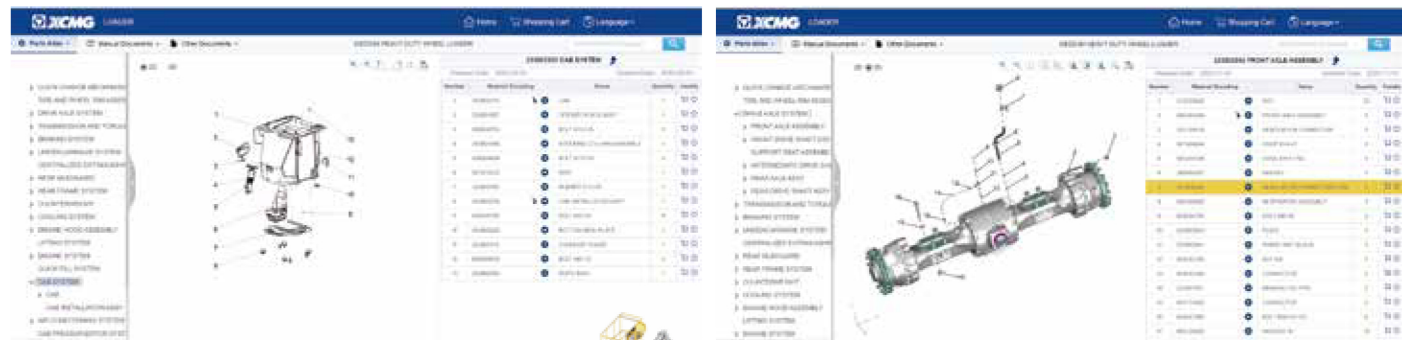
XCMG group has built a strong reputation based on the quality, reliability and durability of its construction machinery. What's more, XCMG has gradually established a service network to constantly provide its local integrated and highly efficient complete solutions for all customers.

## Full Range of Services Ready for you

In order to respond to your needs as fast as possible, XCMG experts are on their way to your job site from one of our facilities near you. Full range of services are available in order to reduce your total cost of ownership and increase your revenue.



XCMG Global Spare parts System



Mobile cranes

Excavators

Aerial work platforms

Wheel loaders

Road machinery

