

XGS50E

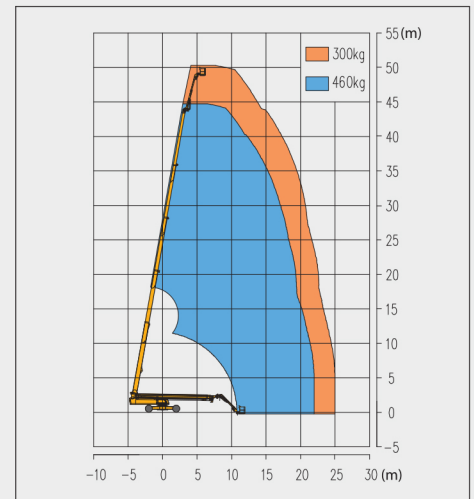
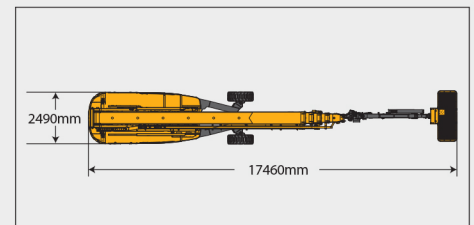
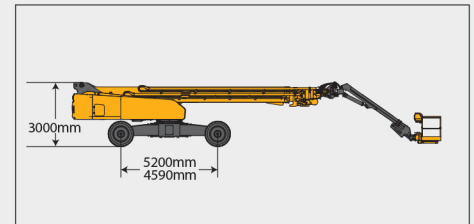
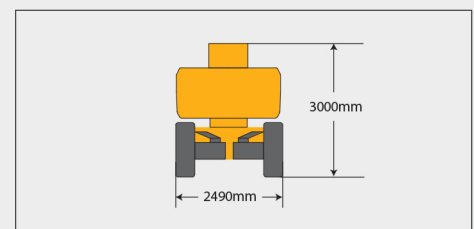
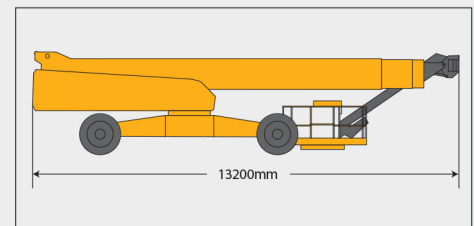
Telescopic Boom Lift-Engine Powered

Item	Metric	
Dimension		
Overall dimension - stowed state	Length	17460mm
	Width	2490mm
	Height	3000mm
Overall dimension - transportation	Length	13200mm
	Width	2490mm
	Height	3000mm
Platform dimension	Length	2400mm
	Width	900mm
	Height	1150mm
Wheelbase (axle retracted/axle extended)	5220mm/4590mm	
Overall width (axle retracted/axle extended)	2490mm/5030mm	
Fly jib length (fully retracted/fully extended)	4647mm/6647mm	
Min. ground clearance	400mm	

Performance	
Max. working height	50m
Max. platform height	48m
Max. working range	25.2m
Max. lift capacity	300kg(unlimited)/460kg(limited)
Max. number of occupants	3
Max. working slope	X-3°/ Y-3°
Telescopic boom luffing range	0 ~ +80°
Fly jib luffing range	-45° ~ +75°
Turntable rotation	360°
Platform rotation	160°
Total weight	24400kg
Driving speed (stowed)	4.5km/h
Driving speed (raised or extended)	0.3-0.5km/h
Min. turning radius-axle retracted (inside/outside)	14000/17200mm(2-wheel) 7600mm/9500mm(4-wheel)
Min. turning radius-axle extended (inside/outside)	3000mm/9300mm(2-wheel) 2800mm/6600mm(4-wheel)
Turntable tailswing (axle retracted/axle extended)	2000mm/730mm
Max. gradeability	45% (24°)

Power source	
Control	12V DC proportional control
Emergency power supply	12V/400Ah
Engine model	Kubota V3307
Engine-power/rpm	54.6kW(2200r/min)
Max. engine torque	285N·m
Engine emission standard	EU V
Hydraulic tank capacity	310L
Fuel tank capacity	200L

Tire	
Tire size	1180mm×445mm
Tire ground pressure	10.67kg/cm ²
Driving wheels	4
Braking wheels	4
Steering wheels	4


Stowed

Trans




SOLID
TO SUCCEED



TELESCOPIC BOOM LIFT XGS50E

Comply with CE

Standard configuration

- 3-entry platform with side revolving door
- Engine condition monitoring and start protection device
- Axle oscillation
- Lowering and moving alarm
- Tilt alarm
- Horn
- Overload and amplitude limit detection
- Chassis tilt protection
- Jib centering and rotating detection
- Limiting position deceleration
- Control joystick self locking
- Work platform tilt protection
- Wire rope anti-loosening detection
- Emergency stop device of platform and chassis
- Emergency power unit
- 4-wheel braking system
- Self-leveling platform
- Proportional joystick control
- Drive enable
- Lockable engine house
- Full time positive traction drive
- Full speed traveling motor
- Telematics pre-interface
- Anti-extrusion protection device
- Hydraulic oil cooler
- Harsh environment kits
- Thumb rocker steering
- Wind speed monitoring protection device



Working height
50meters



Lift capacity
300/460Kg



Diesel
power



Optional configuration

- Optional DEUTZ Euro 5 engine
- Gray perfusion-type solid tires 1180mmx445mm
- Hydraulic generator
- Platform power supply
- Air pipe to platform
- Anti-extrusion protection device
- Tool tray
- Working light assembly
- Fall arrest assembly
- Platform anti-squeeze auxiliary track
- Platform with half-height mesh panel



MG PLANT & MACHINERY
EXPORTS & SALES LTD

TEL: 094 92 51209



MG *PLANT & MACHINERY*
EXPORTS & SALES LTD

CALL SALES

094 9251209

087 2466111

087 6685466