

# XGS58E

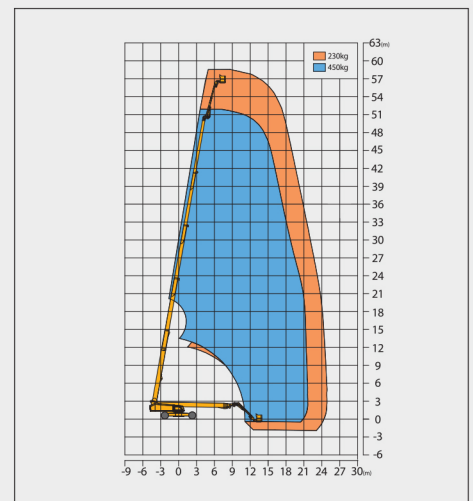
## Telescopic Boom Lift-Engine Powered

Item	Metric	
Dimension		
Overall dimension - stowed state	Length	19450mm
	Width	2490mm
	Height	3070mm
Overall dimension - transportation	Length	14600mm
	Width	2490mm
	Height	3070mm
Platform dimension	Length	2400mm
	Width	900mm
	Height	1150mm
Wheelbase (axle retracted/axle extended)		5220mm/4590mm
Overall width (axle retracted/axle extended)		2490mm/5030mm
Fly jib length (fully retracted/fully extended)		4647mm/6647mm
Min. ground clearance		250 mm

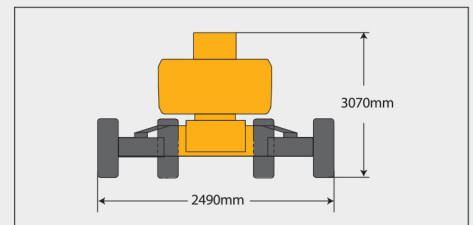
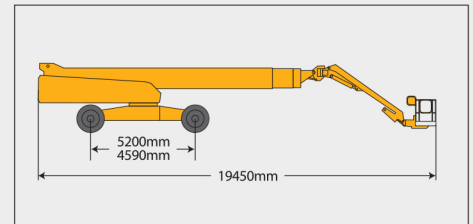
Performance		
Max. working height	58.6m	
Max. platform height	56.6m	
Max. working range	24.4m	
Max. lift capacity	230kg (unlimited)/450kg(limited)	
Max. number of occupants	3	
Max. working slope	X-3°/ Y-3°	
Telescopic boom luffing range	-1°~80°	
Fly jib luffing range	-45°~75°	
Turntable rotation	360°	
Platform rotation	160°	
Total weight	27900 kg	
Driving speed (stowed)	4.5km/h	
Driving speed (raised or extended)	0.3-0.5km/h	
Min. turning radius-axle retracted (inside/outside)	14000/17200mm(2-wheel) 7600mm/9500mm(4-wheel)	
Min. turning radius-axle extended (inside/outside)	3000mm/9300mm(2-wheel) 2800mm/6600mm(4-wheel)	
Turntable tailswing (axle retracted/axle extended)	2320mm/1590mm	
Max. gradeability	45% (24°)	

Power source		
Control	12V DC proportional control	
Emergency power supply	12V/400Ah	
Engine model	Deutz/TCD3.6L4	
Engine-power/rpm	74.4kW(2300r/min)	
Max. engine torque	410N·m	
Engine emission standard	EUIII	
Hydraulic tank capacity	260L	
Fuel tank capacity	200L	

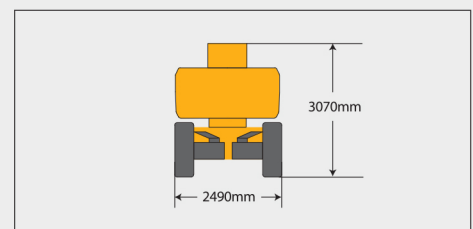
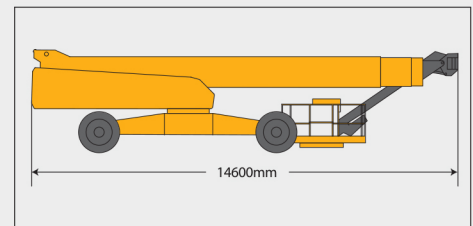
Tire		
Tire size	1180 mm×445mm	
Tire ground pressure	11.6kg/cm <sup>2</sup>	
Driving wheels	4	
Braking wheels	4	
Steering wheels	4	



Stowed



Trans





**SOLID**  
TO SUCCEED



# TELESCOPIC BOOM LIFT XGS58E

Comply with CE

## Standard configuration

- 3-entry platform with side revolving door
- Engine condition monitoring and start protection device
- Axle oscillation
- Lowering and moving alarm
- Tilt alarm
- Horn with adjustable volume
- Weighing and amplitude limit detection
- Chassis tilt protection
- Jib centering and rotating detection
- Wire rope anti-loosening detection
- Emergency stop device of platform and chassis
- Emergency power unit
- 4-wheel braking system
- Self-leveling platform
- Proportional joystick control
- Drive enable
- Lockable engine house
- Full time positive traction drive
- Full speed traveling motor
- Telematics pre-interface
- Anti-extrusion protection device
- Hydraulic oil cooler
- Harsh environment kits
- Thumb rocker steering
- Wind speed monitoring protection device



Working height  
58.6 meters



Lift capacity  
230/450Kg



Diesel  
power



## Optional configuration

- Gray perfusion-type solid tires 1180mm×445mm
- Platform power supply
- Air pipe to platform
- Tool tray
- Working light assembly
- Fall arrest assembly
- Platform anti-squeeze auxiliary track
- Platform with half-height mesh panel
- Hydraulic generator



**MG** PLANT & MACHINERY  
EXPORTS & SALES LTD

**TEL: 094 92 51209**



**MG** *PLANT & MACHINERY*  
*EXPORTS & SALES LTD*

**CALL SALES**

**094 9251209**

**087 2466111**

**087 6685466**